



DATA SHEET

Nr.: 081874/2008

Date: 19-DEC-2008

Singlephase Induction Motor - Squirrel Cage

Customer : TWEM ENTERPRISE CO., LTD
Product code : 11181954
Product line :

Frame : E56HC
Output : 2.5//2.2 HP (1.85//1.65 kW)
Frequency : 60//50 Hz
Poles : 4
Rated speed : 1750//1450 rpm
Slip : 2.78//3.33 %
Rated voltage : 115/230//110/220V
Rated current : 20.8/10.4//22.0/11.0 A
L. R. Amperes : 156/78.0//152/76.0 A
II/In : 7.5//6.9 Code J
No load current : 6.20/3.10//12.2/6.10 A
Rated torque : 7.50//7.97 ft.lb
Locked rotor torque : 260//250 %
Breakdown torque : 240//250 %
Insulation class : F
Locked rotor time : 6//6 s (hot)
Service factor : 1.15//1.15
Duty cycle : S1
Ambient temperature : 40°C
Altitude : 100 m.a.s.l

Enclosure : IP55 (TEFC)
Mounting : B34R(D)/F1
Rotation : Both
Aprox. weight* : 53.8 lb
Moment of inertia : 0.2302 sq.ft.lb

Load	Power factor	Efficiency (%)
100%	0.97//0.86	79.0//78.0
75%	0.96//0.80	76.0//75.0
50%	0.94//0.71	69.0//68.0

	Bearing	Quantity (lubricant)
Front	6204-ZZ	-----
Rear	6203-ZZ	-----

Lubrication interval: -----
Grease - MOBIL POLYREX EM

Notes:

This is an updated revision. The previous one must be disregarded. The figures given herewith are regarded as average values based on actual tests and applied to sinusoidal power supplied motors, within permissible tolerances under NEMA MG 1-12. (*) Weight value can be changed without previous notification.

Performed by
felipeferro

Checked
alvaroluiz

Revision
Nr.: 3 Date: 11-MAY-2015

Approved

DOCUMENT FOR APPROVAL

No reproduction of this drawing is allowed without written permission of WEG Motores

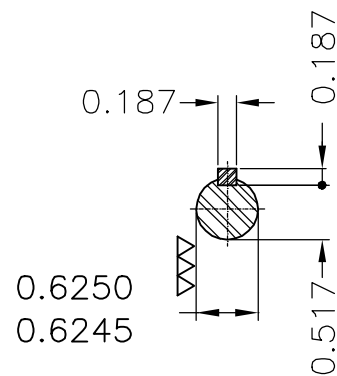
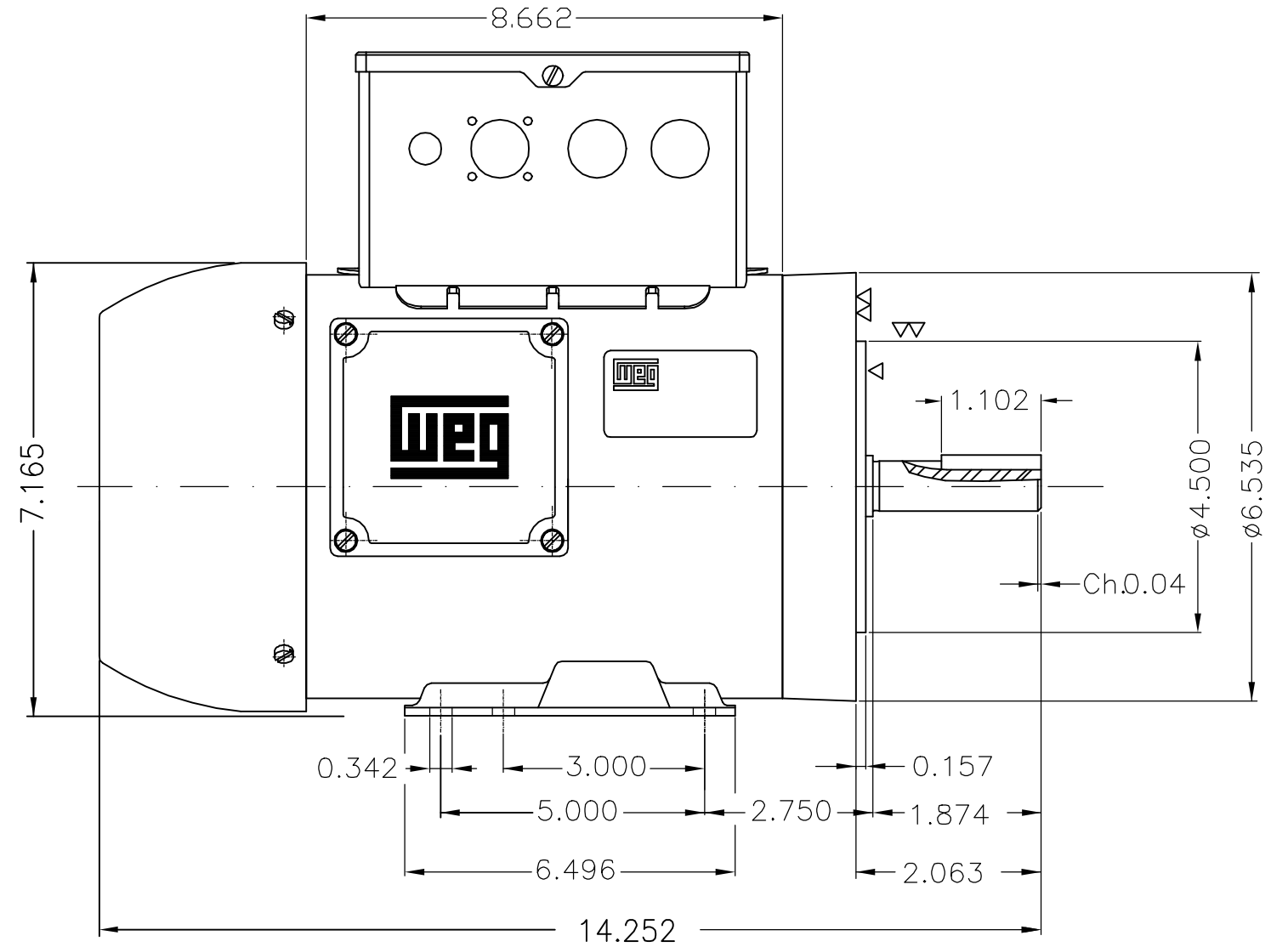
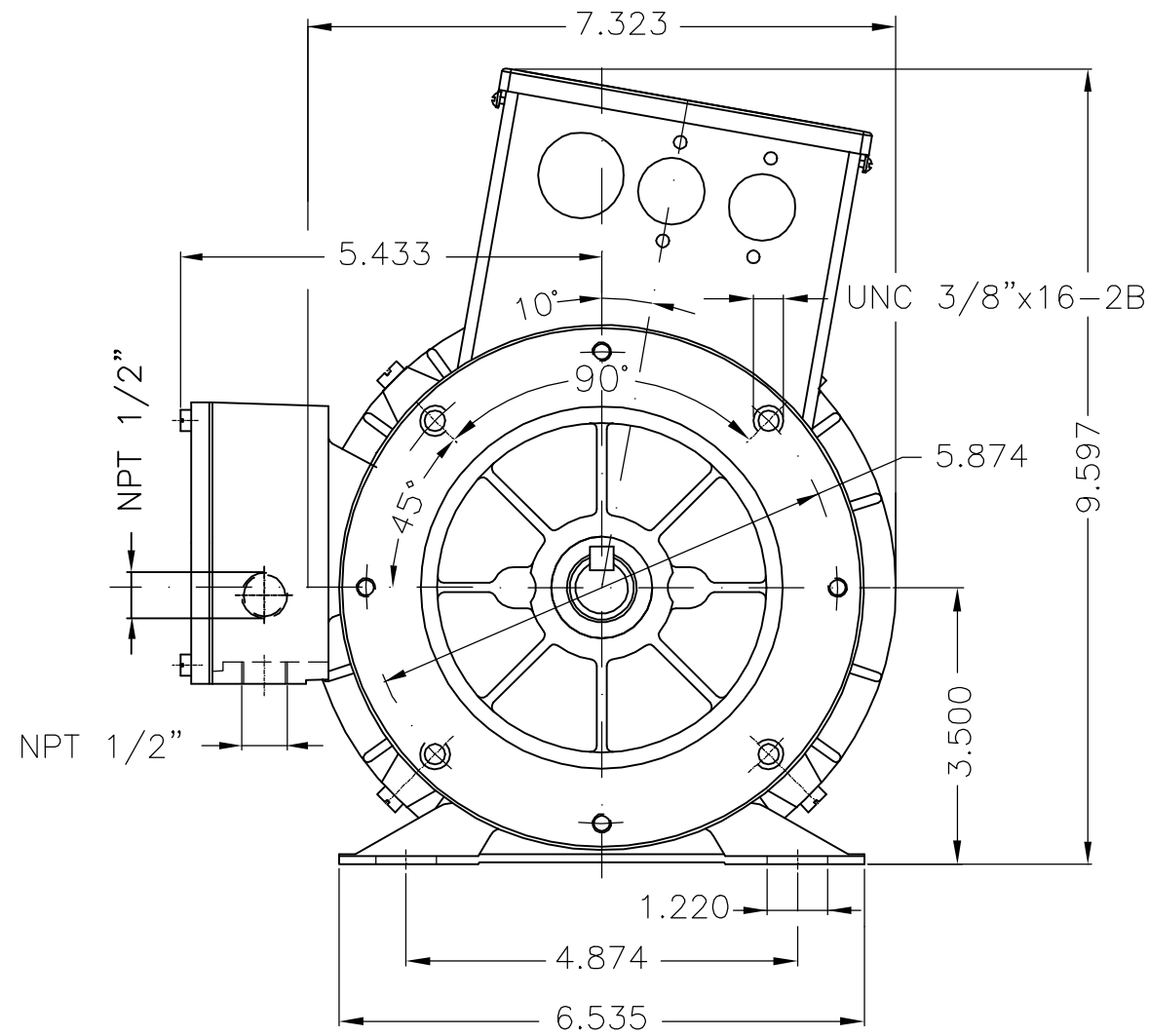
EIXO	
PADRÃO	X
OPCIONAL	
ESPECIAL	

Dimensões em polegada
Dimensions in inch

**CERTIFIED
WEG MOTORES**

Certified document.
Not subject to changes.

THIS IS AN UPDATED REVISION, THE PREVIOUS ONE MUST BE DISREGARDED.



Flange sem pintura / Flange without painting						
Forma construtiva B34D / Mounting B34R(D)						
WEG ELETRIC CORP. - SUWANEE						
500000771552		AALT.CONFORME CLAIM 412875767	DEISEL		ANDERSONLB	09.07.2013 08
500000283267		ACRESC.FUROS HASTES NO FLANGE	TOMAZ		TOMAZ	03.03.2010 07
ECM ECM	LOC LOC	RESUMO MODIFICAÇÃO SUMMARY OF MODIFICATIONS	EXECUTADO EXECUTED	VERIFICADO CHECKED	LIBERADO RELEASED	DATA DATE
EXEC. /EXECUTED	DEISEM	SINGLE PHASE MOTOR FRAME E56HC IP55 (TEFC) BOMBA DE PISTÃO	10000376802			
VERIF. /CHECKED			APR	08		
LIBER. /RELEASED	DEISEM					
DATA LB /REL DT	14.01.2009	WMO-JGS	JARAGUÁ DO SUL	ENG. MOTORES MONOFÁSICOS	FOLHA/SHEET	1 / 1

2.5 HP 04 Poles 60//50 Hz

400367111

A

UNCONTROLLED COPY

RELEASED

ZME A3